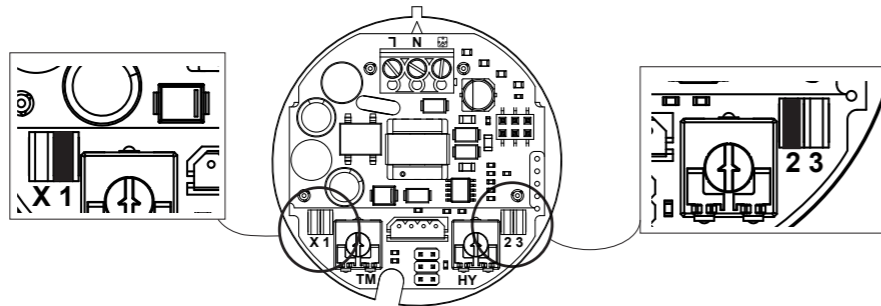


Jumper	Low speed setting
Jumper 1	Minimum Speed 1
Jumper 2	Minimum Speed 2



Maximum speed selection

The maximum speed is selectable by switch or light (Fig. 9/1) or via external switch (Fig. 9/2).

Adjusting humidity thresholds and timers

To adjust the humidistat and timer trimmers, remove the front cover of the fan to access the trimmers.

The humidistat (HY) can be adjusted between 40% and 90% relative humidity. Turn clockwise to decrease sensitivity and set at a higher level of relative humidity.

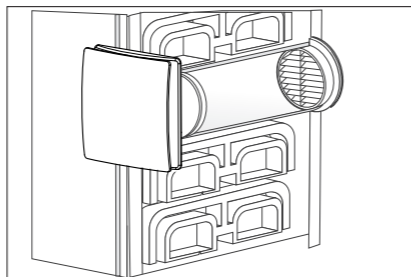
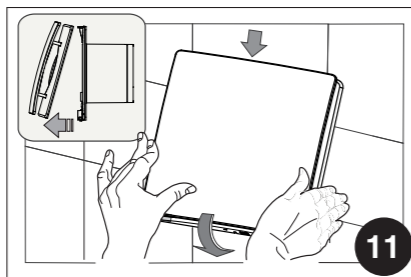
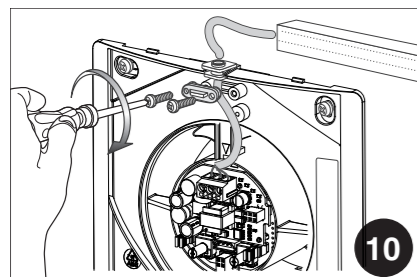
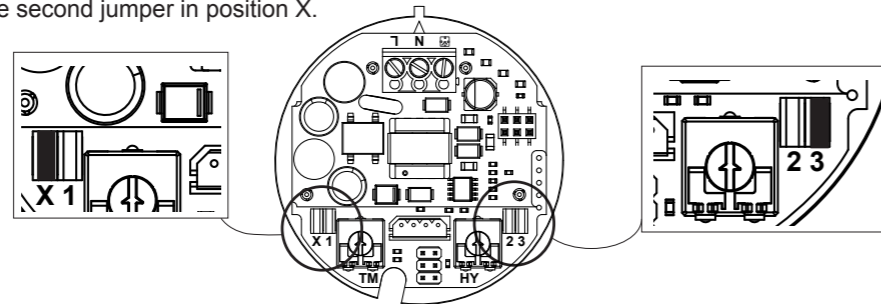
The timer (TM) is adjustable between 0 and 30 minutes. Turn the trimmer clockwise to increase the overrun time, or anti-clockwise to decrease it.

Activation / Deactivation DELAY ON-TIMER

To enable the DELAY-ON TIMER place the second jumper in position 3.

To disable the DELAY-ON TIMER place the second jumper in position X.

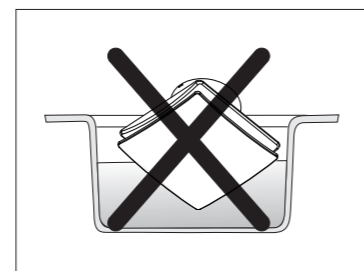
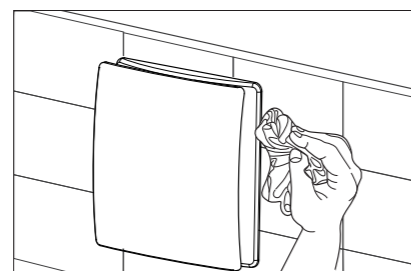
Jumper	DELAY-ON TIMER
Jumper X	Disable
Jumper 3	Enable




TROUBLESHOOTING

PROBLEM	CAUSE AND REMEDY
The appliance does not switch on	There is no voltage. Check the main switch and/or the electrical connections.
The impeller does not turn	Check that its movement is not slowed down.

MAINTENANCE



DISMANTLING AND RECYCLING

 If a crossed-out wheeled bin is illustrated on a product, this means that the product satisfies the requirements of the 2012/19/EU European Directive. Conform to the local norms regarding the disposal of waste materials and do not dispose of old products in normal domestic waste material.



Maico Italia S.p.A.
Via Maestri del Lavoro, 12 - 25017 Lonato d/G (BS) - Italia
Tel +39 030 9913575 Fax +39 030 9913766
e-mail: info@maico-italia.it www.maico-italia.it



The equipment must be installed only by a specialised technician!

Read and apply that referred to the following pages before carrying out the installation.
Keep this manual in a safe place.



In case of incorrect or doubtful translation, only the Italian text applies (Translation of the original instructions).

Dear Customer,

the product you have purchased is an axial extractor fan for exhausting directly outside through short lengths of ducting and is suitable for wall or ceiling installation. To ensure optimum operation and guarantee a long life, please read this manual carefully that explains how to effectuate a correct installation and to use and maintain the product properly. Following all the instructions ensures reliability and long life, both mechanically and electrically.

The manufacturer declines any responsibility for damages caused to persons or things deriving from the lack of observance of the following described instructions.

The product is constructed using state of the art technology and respects the standards in force regarding electrical equipment. It conforms with the EMC European Directive in force regarding radio interference suppression and electro-magnetic compatibility.

Installation and usage instructions



WARNING: Serious injury or death can be caused if these instructions are not applied!

- Do not use this product for uses that are different from those for which it has been designed.
- After removing the product from its packaging ensure that it is complete and undamaged; if in doubt, immediately contact a qualified electrician.
- Do not leave parts of the packaging within reach of children or incompetent persons. To dispose of the packaging and the appliance at the end of its useful life refer to the recycling norms in force in your country.
- Immediately contact a qualified person (authorised dealer or the manufacturer) if the product is dropped or knocked to check its correct functioning.
- Do not touch the appliance with wet or humid parts of the body (e.g., hands or feet).
- This appliance can be used by children aged from 8 years and above and persons with reduced physical, sensory or mental capabilities or lack of experience and knowledge if they have been given supervision or instruction concerning use of the appliance in a safe way and understand the hazards involved. Children shall not play with the appliance. Cleaning and user maintenance shall not be made by children without supervision.
- The means of disconnection from the supply mains must have a contact separation in all poles and must provide full disconnection under overvoltage category III conditions.
- If there is a combustible-fed device (water heater, gas boiler, etc. of the sealed chamber type) in the room where the product is to be installed check that the re-circulation of air is sufficient to ensure a good combustion for the correct functioning of these devices, precautions must be taken to avoid the back-flow of gases into the room from the open flue of gas or other fuel-burning appliances.
- To avoid the risk of fire do not use the product in the presence of inflammable substances and vapours, such as alcohol, insecticides, petrol, etc.
- The product can be connected to the supply mains only if the voltage and the frequency of the supply mains correspond to those written in the rating label.
- In the case of malfunction, anomaly or any type of fault disconnect the appliance from the electrical main supply and contact a qualified person. Use only original spare parts for repairs.
- The electrical system to which the appliance is connected must conform with the local norms in force regarding electrical systems.
- The appliance must not be used to activate water heaters, room heaters, etc.
- It is forbidden for the appliance to discharge air into hot air ducts used for the evacuation of fumes coming from the combustion of stoves or other combustion devices. It must discharge directly outside the building.

⚠ WARNING: Damage can be caused to the device if the following instructions are not applied!

- Do not use the product at environmental temperatures more than 40°C.
- Do not leave the appliance exposed to atmospheric agents (rain, sun, snow, etc.). The possible applications of this product are illustrated in this manual.
- Do not immerse the appliance or parts of it in water or any other liquids.
- When cleaning or carrying out ordinary maintenance, check the integrity of the appliance.
- The flow of air or fumes that is conveyed by the appliance must be clean and free of greasy elements, soot, chemical/corrosive agents and inflammable or explosive mixtures.
- Do not obstruct the air inlet and outlet of the appliance in any way whatsoever. When using air ducting make sure that the ducting is not blocked.
- It is recommended to install it at a minimum height of 2.30 metres from the floor.
- For an optimum functioning of the appliance, it is necessary to ensure an adequate recirculation of air in the room. Consult the local norms with regards to this.

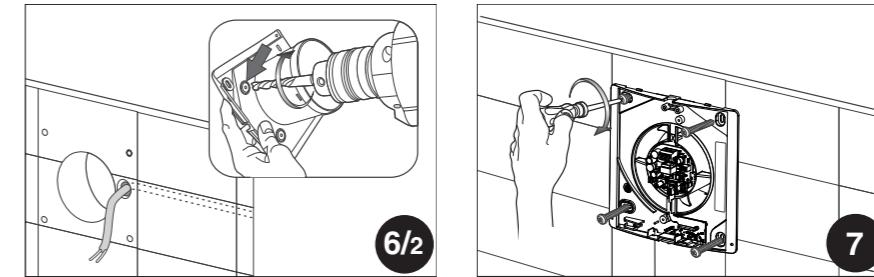
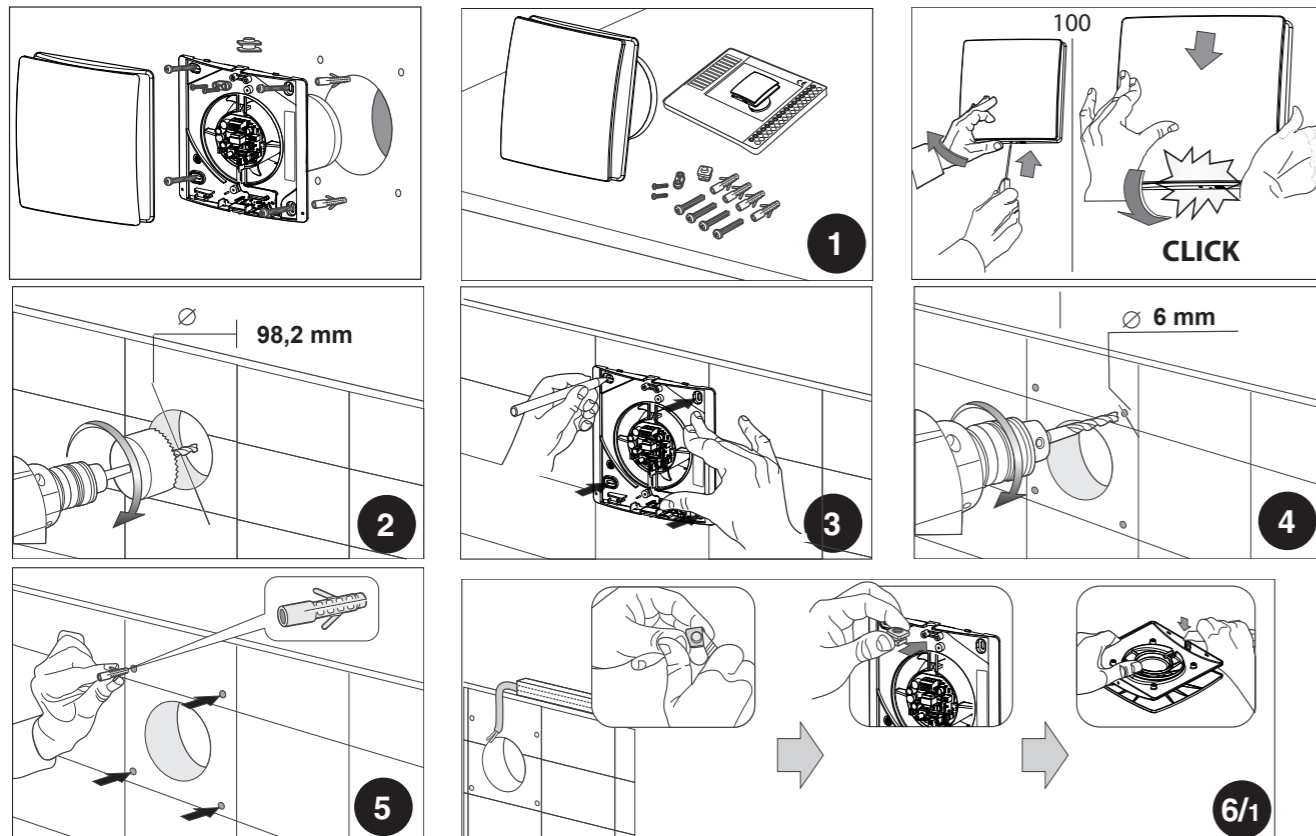
THIS EQUIPMENT IS FITTED WITH A MANUAL RESET PROTECTION SYSTEM, WHICH, IN CASE OF MECHANICAL IMPEDIMENT THAT PREVENTS ROTATION, WILL KICK IN AND STOP THE MOTOR.

TO RESUME NORMAL OPERATIONS, PLEASE PROCEED AS FOLLOWS:

- DISCONNECT THE EQUIPMENT FROM THE POWER SUPPLY;
- REMOVE THE CAUSE OF THE MECHANICAL IMPEDIMENT (QUALIFIED PERSONNEL ONLY)
- RECONNECT THE EQUIPMENT TO THE POWER SUPPLY.

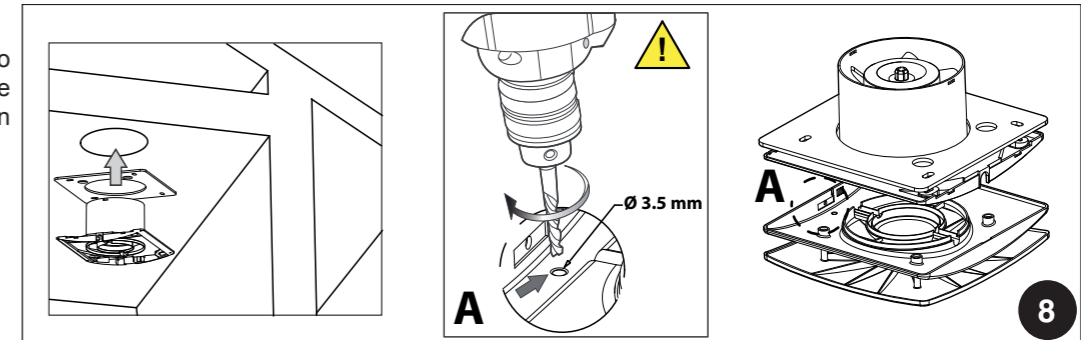
THE EQUIPMENT WILL RESUME NORMAL FUNCTIONING ONLY IF NO ADDITIONAL ANOMALIES ARE DETECTED BY THE PROTECTION SYSTEM. SHOULD THE PROBLEM PERSIST, PLEASE CONTACT THE SERVICE CENTRE.

INSTALLATION

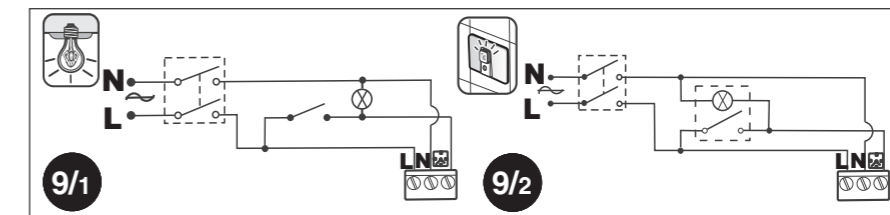
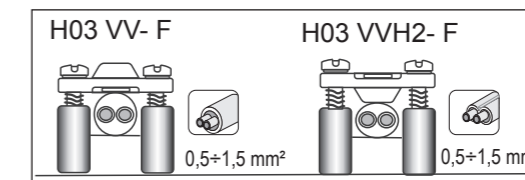


CEILING INSTALLATION

it is recommended to drill the pre-set hole (A) for condensation drainage.



WIRING DIAGRAMS



FUNCTIONING

Version ELEGANCE 100 EC 2V

This fan combines the latest technology with energy saving and efficiency. It is a quiet running, 3 speed fan. It is designed to run continuously at a pre-selectable choice of 2 trickle speeds (fixed at installation). The user can boost the fan speed to its maximum performance when required via an external switch.

Version ELEGANCE 100 EC 2V DT

This version is equipped with 3 speeds and operates continuously choosing between 2 pre-selectable speeds (using a jumper). In addition, it is equipped with the delay-on-timer function, which is activated by positioning the second available jumper in the way described in Settings section. The 2V function makes the fan to work 24h-24h to the pre-selected speed, this until the user activates an external switch that will bring it to the maximum speed. It is equipped with the delay-on timer; this means that the product continues to operate at the continuous speed as long as the user does not activate an external switch. The maximum speed activation will be delayed by two minutes. If the maximum speed of the switch is turned off before that time, the fan will continue operating at continuous speed. Conversely, after two minutes of the delay-on timer the product will start to run at full speed until a later switch off. Once disabled, after a period of time that can be set between 0 and 30 minutes, the product will start operating at continuous speed.

Version ELEGANCE 100 EC 2V HDT

3 speed, continuous running fan, equipped with selectable delay-on timer function (delay on boost of 2 minutes) and humidity sensor. The fan runs continuously at the pre-selected lower speed, and the boost (speed 2) will start to operate automatically when the relative humidity (adjustable between 40% and 90% +/-5% tolerance) reaches the pre-set level and will continue to operate at this speed until the humidity has been dispersed and the adjustable over-run timer (adjustable from 0 to 30 minutes) has completed its cycle. The boost speed can also be activated by as described for model ELEGANCE 100 EC 2V.

SETTINGS

Selection of the continuous low speed

The low speed running 24h can be selected between 2 preset minimum speeds – see below.